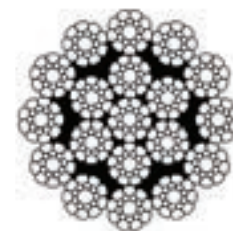


# Flex-X<sup>®</sup> 19:

## Designed for single-part hoist systems on cranes.



- Longer service life
- Lower operating costs
- Less wear to sheaves and drums



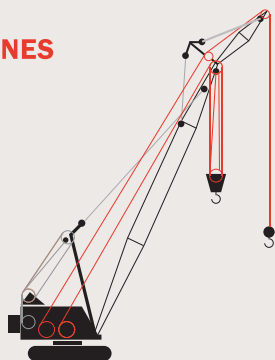
Flex-X 19, is designed for use anywhere the rotation-resistant characteristics of a category 2 rotation-resistant rope are required. Six strands are laid around a core strand in one direction, and then 12 strands are laid around this first operation in the opposite direction. Because of its tightly compacted smooth design, Flex-X 19 offers more crushing resistance than standard 19 x 7 rope, higher strength-to-diameter, resistance to bending fatigue, exceptional stability, reduced wear to sheaves and drums, and improved handling, operating and spooling characteristics.

Flex-X 19 has also demonstrated greater fatigue resistance to substantially cut rope expense and extend service life. It's ideal for multi-part hoist lines wherever you encounter spooling problems, drum crushing, block twisting or have fast line speeds.

### FLEX-X 19 is recommended for:

#### CRAWLER AND TRUCK CRANES

- Main hoist rope
- Auxiliary hoist rope



### MINIMUM BREAKING FORCE AND WEIGHTS FOR FLEX-X 19

Diameter (in)	Approx. wt/ft (lbs)	Minimum breaking force (tons of 2,000 lbs)
7/16	0.43	11.2
1/2	0.49	14.6
9/16	0.65	18.5
5/8	0.78	22.7
3/4	1.16	32.4
7/8	1.58	43.8
1	2.05	56.9
1 1/8	2.57	71.5

Should not be used with a swivel.